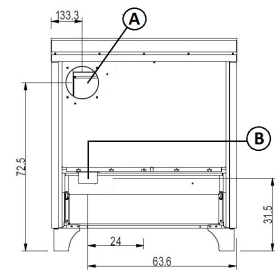
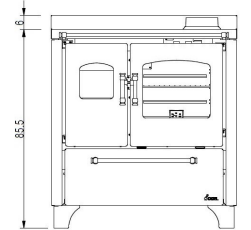
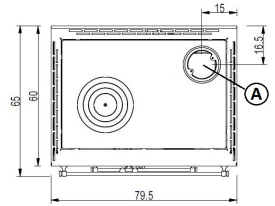




Nominal power	kW	7,5
Reduced power	kW	-
Introduced thermal power (max)	kW	9,4
Nominal water useful power	kW	-
Reduced water useful power	kW	-
Nominal efficiency	%	85,5
Reduced efficiency	%	-
Heating volume (min-max)	m ³	180
Nominal CO at 13% O ₂	%	0,094
Reduced CO at 13% O ₂	%	-
Emissions CO (13% O ₂) (min-max)	mg/Nm ³	1167
Emissions OGC (13% O ₂) (min-max)	mg/Nm ³	69
Emissions NOX (13% O ₂) (min-max)	mg/Nm ³	85
Dust content at 13% O ₂ (min-max)	mg/Nm ³	20
Boiler capacity (H ₂ O)	l	-
Hopper capacity	kg	-
Combustible		Legna
Hourly consumption (min-max)	kg/h	2,2
Autonomy (min-max)	h	-
Ignition electrical absorption (max)	W	-
Operating electrical absorption (max)	W	60
Supply and frequency	V - Hz	230 - 50
Chimney flue depression	Pa	12
Exhaust diameter	mm	140
Combustion air inlet diameter	mm	-
Mass of smoke (min-max)	g/sec	7,1
Exhaust fumes temperature (max)	°C	179
Net weight	kg	152
Gross weight	kg	166
Exhaust fumes	see	A
Hole combustion air inlet	see	B
Ducting outlet	see	-
Ducting capability up to	m	-



BimSchV 2015
Regensburg
München
Stuttgart
Aachen



MATCH

7120020	NEUTRAL STRUCTURE	EAN 8053859012184
7120021	NEUTRAL STRUCTURE with ventilation + light kit	EAN 8053859012191
6920005	Anthracite steel	EAN 8053859012238
6920006	White steel	EAN 8053859012245
6920007	Red steel	EAN 8053859012252

OPTIONAL

5020005	Feet	EAN 8053859012597
5020007	Podium inox	EAN 8053859012610
5020010	H4 upstand	EAN 8053859012641
5020011	H6 upstand	EAN 8053859012658
5013003	Top	EAN 8033123613361

PLUS



Cooking



Central Top and back exhaust



Refractory stone inner with 2nd combustion air



OPTIONAL
Ventilation + light kit



View on the oven



Cast iron door

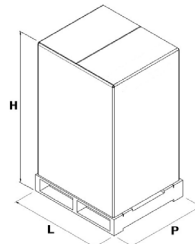


Built-in



Freestanding

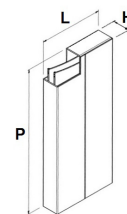
STOVE PACKING



L (cm)	H (cm)	P (cm)
97	102,1	79

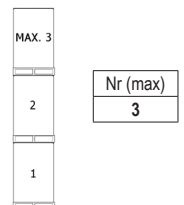
VOLUME (m ³)
0,78

LINING PACKING

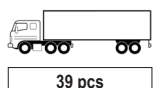


L (cm)	H (cm)	P (cm)	
steel	60	13,5	80

STOCKING



TRANSPORT



39 pcs